



**MESTIZAJE**

---

WOW

## Introduction / Introducción



### **MESTIZAJE**

Mix of cultures

---

Mestizaje is our appreciation to the imperfect and the natural. Embracing ancestral "Zellige" art and the antique terracotta charms.

**Zellige** walls are a tribute to the North African Zellige craftsmanship, treasured from one generation to another.

We propose vibrant translucent colours with 12 blended shades for each one, surface textures and shaped backs for your walls; in combination with **Chateau** floors, inspired in graceful French terracotta, century old beauty of clay in chalky colours, embellished by the passage of time.

Mestizaje breaths new life into each ceramic piece.

---

Mestizaje es nuestra apreciación de lo imperfecto y lo natural. Abarcando el arte ancestral del Zellige y el encanto de la antigua terracota.

Zellige es un homenaje a la artesanía Zellige del norte de África, atesorada generación tras generación.

Proponemos colores translúcidos vibrantes, con 12 tonos mezclados para cada uno, superficies texturadas y reverso de las piezas de aspecto cincelado; en combinación con los pavimentos Chateau, inspirados en la elegante y grácil terracota francesa, la belleza centenaria de la tierra y sus colores arcillosos embellecidos por el paso del tiempo.

Mestizaje aporta viveza y autenticidad a cada una de sus piezas.

## MESTIZAJE

### Product introduction / Introducción de productos

---

#### Zellige

5"x5" / 12,5x12,5 cm

(Different colour shades randomly mixed within the box / Diferentes tonalidades encajadas aleatoriamente)



White Matt



White



Grey



Graphite



Aqua



Turques

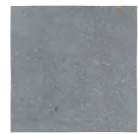
#### Zellige Decor

5"x5" / 12,5x12,5 cm

(24 Different patterns randomly mixed within the box / 24 diseños encajados aleatoriamente)



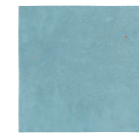
White



Grey



Graphite



Aqua



Turques

#### Zellige Bullnose

1.5"x5" / 3,5x12,5 cm



White Matt



White



Grey



Graphite



Aqua



Turques

#### Chateau Crayon

1.5"x9" / 4x22,6 cm

(Different colour shades randomly mixed within the box / Diferentes tonos encajados aleatoriamente)



White Gloss



Cotto



Graphite

#### Chateau

7"x7" / 18,5x18,5 cm

(Different colour shades randomly mixed within the box / Diferentes tonos encajados aleatoriamente)



White Gloss



Cotto



Graphite

#### Chateau Lines

7"x7" / 18,5x18,5 cm



White Gloss



Cotto



Graphite

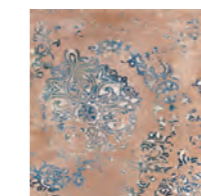
#### Chateau Antique

7"x7" / 18,5x18,5 cm

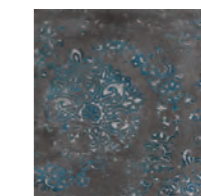
(28 Different patterns randomly mixed within the box / 28 diseños encajados aleatoriamente)



White Gloss



Cotto



Graphite

**ZELLIGE**  
5"x5" / 12,5x12,5 cm

**08**



**ZELLIGE DECOR**  
5"x5" / 12,5x12,5 cm

**20**



**CHATEAU**  
7"x7" / 18,5x18,5 cm

**30**



**CHATEAU LINE**  
7"x7" / 18,5x18,5 cm

**34**



**CHATEAU ANTIQUE**  
7"x7" / 18,5x18,5 cm

**38**



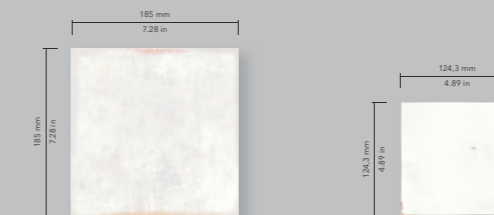
**CHATEAU CRAYON**  
1.5"x9" / 4x22,6 cm

**44**



**TECHNICAL FEATURES**  
Características técnicas

**50**



# ZELLIGE

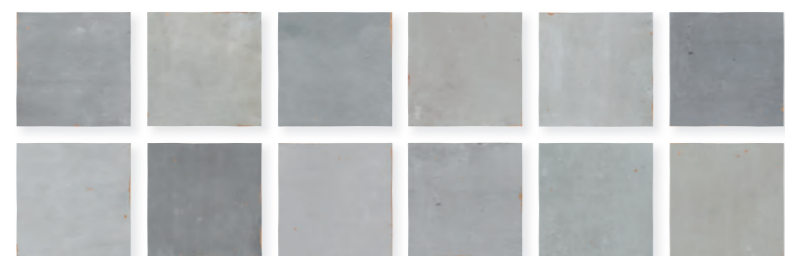
5" x 5" / 12,5 x 12,5 cm



White Matt



White



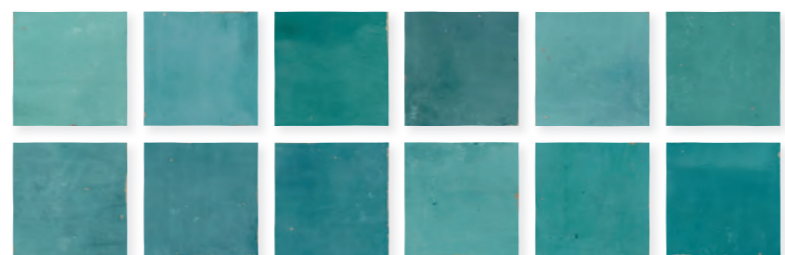
Grey



Graphite



Aqua



Turques

Different colour shades randomly mixed within the box / Diferentes tonalidades encajadas aleatoriamente.



Zellige  
Graphite



**Zellige**  
Turques



**Zellige**  
Aqua  
**Chateau**  
White Gloss



Zellige  
Graphite  
Chateau  
White Gloss



**Zellige**  
Grey



**Zellige**  
White  
**Chateau**  
Graphite





**Zellige**  
White Matt



**Zellige**  
White Matt

## ZELLIGE BULLNOSE

1.5"x5" / 3,5x12,5 cm



Available colours / Colores Disponibles



White Matt



White



Grey



Graphite



Aqua



Turques

Different colour shades randomly mixed within the box / Diferentes tonalidades encajadas aleatoriamente.



Zellige Bullnose  
Grey  
Zellige  
Grey

# ZELLIGE DECOR

5" x 5" / 12,5 x 12,5 cm



White

Grey

Graphite

Aqua

Turques

24 different patterns randomly mixed within the box / 24 diseños diferentes encajados aleatoriamente.



Zellige Decor  
Turques



**Zellige & Zellige Decor**  
Graphite



**Zellige & Zellige Decor**  
Graphite



Zellige & Zellige Decor  
Grey



**Zellige & Zellige Decor**  
White



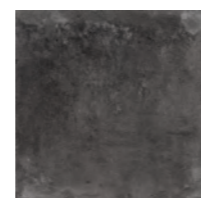
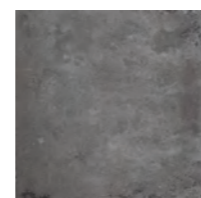
**Zellige & Zellige Decor**  
Aqua



**Zellige Decor**  
Turques

# CHATEAU

7"x7" / 18,5x18,5 cm



White Gloss

Cotto

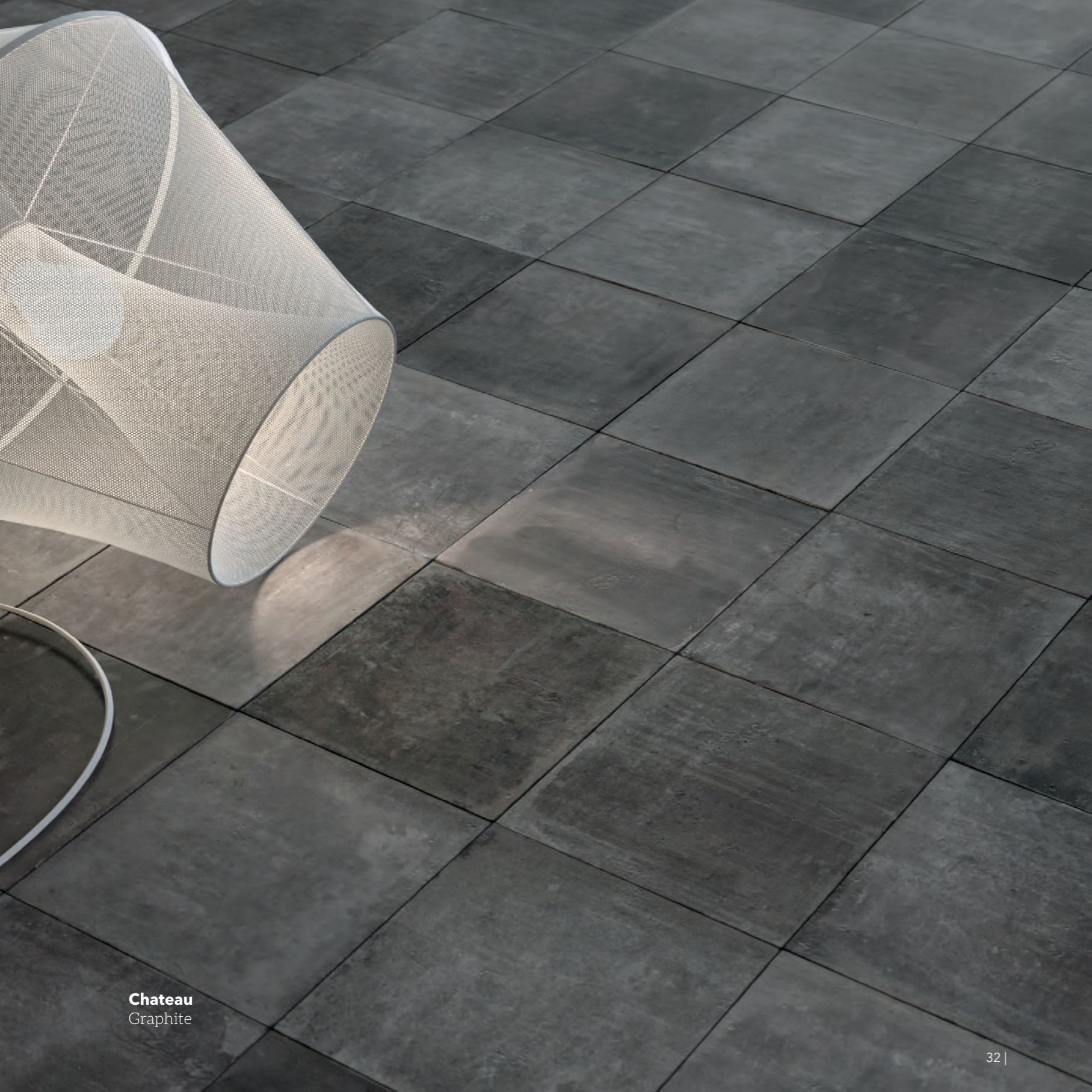
Graphite

Different colour shades randomly mixed within the box / Diferentes tonalidades encajadas aleatoriamente.



Chateau  
Cotto





**Chateau**  
Graphite



**Chateau**  
White Gloss

# CHATEAU LINES

7"x7" / 18,5x18,5 cm



White Gloss

Cotto

Graphite

Different colour shades randomly mixed within the box / Diferentes tonalidades encajadas aleatoriamente.



Chateau Lines  
Graphite



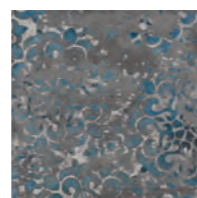
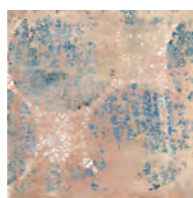
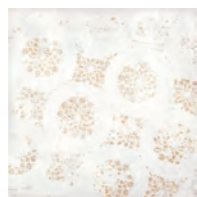
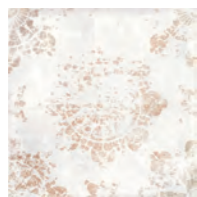
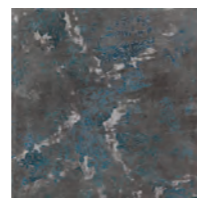
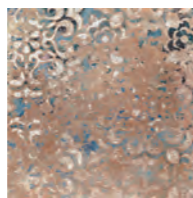
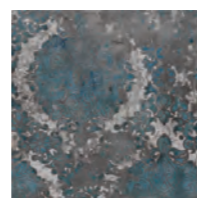
**Chateau Lines**  
Cotto



**Chateau Lines**  
White Gloss

# CHATEAU ANTIQUE

7"x7" / 18,5x18,5 cm



White Gloss

Cotto

Graphite

28 different patterns randomly mixed within the box / 28 diseños diferentes encajados aleatoriamente.



Chateau Antique  
White Gloss





**Chateau Antique**  
Graphite

**Zellige**  
White



**Chateau Antique**  
Graphite

# CHATEAU CRAYON

1.5"x9" / 4x22,6 cm



White Gloss



Cotto



Graphite

**Different colour shades randomly mixed within the box.**  
Diferentes tonalidades encajadas aleatoriamente.



Chateau 66,6%  
Chateau Crayon 33,4%  
Cotto

Chateau 66,6%  
Chateau Crayon 33,4%  
Graphite





**Chateau Crayon 33,4%**  
White Gloss  
**Chateau 66,6%**  
Cotto



**Chateau 66,6%**  
**Chateau Crayon 33,4%**  
White Gloss

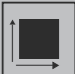

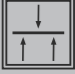







## MESTIZAJE

### Technical Features / Información Técnica










#### Dry-pressed ceramic tiles with water absorption B I a ≤ 0,5% for interior and exterior floors and walls.

Baldosas cerámicas prensadas en seco con absorción de agua B I a ≤ 0,5% para suelos y paredes interiores y exteriores.

FEATURES / CARACTERÍSTICAS	SPECIFICATION / ESPECIFICACIÓN	NORMA
 Dimensional Features	186 mm +/- 0,6 % x 186 mm +/- 0,6 % 40 mm +/- 0,6 % x 226 mm +/- 0,6 %	UNE-EN ISO 10545-2:1998
 Water absorption	$E_b \leq 0,5\%$	UNE-EN ISO 10545-3:1997
 Modulus of rupture and breaking strength	Minimum 35 N/mm <sup>2</sup> Individual Minimum 32 N/mm <sup>2</sup>	UNE-EN ISO 10545-4:2012
 Abrasive resistance	2 - 4 According to model	UNE-EN ISO 10545-7:1999
 Crazing resistance	Pass	UNE-EN ISO 10545-11:1997
 Frost resistance	Pass	UNE-EN ISO 10545-11:1997
 Household products resistance	GA	UNE-EN ISO 10545-13:1998
 Chemical resistance	GLA	UNE-EN ISO 10545-13:1998
 Stain resistance	>3	UNE-EN ISO 10545-14:1998
 Non-slip value	R9 / CLASS 2 DCOF >0,46 (Except Chateau White Gloss)	DIN 51130:2014 ANSI A137.1:2012

#### Technical features for Dry-Pressed ceramic tiles with water absorption B III (Eb >10%)

Características técnicas para las baldosas cerámicas prensadas en seco del grupo B III (Eb >10%)

FEATURES / CARACTERÍSTICAS	SPECIFICATION / ESPECIFICACIÓN	NORMA
 Dimensional Features	124,3 mm +/- 0,5 % x 124,3 mm +/- 0,5 %	UNE-EN ISO 10545-2:1998
 Water absorption	$E_b > 10\%$	UNE-EN ISO 10545-3:1997
 Modulus of rupture and breaking strength	Thickness ≤ 7,5 mm mínimo 15 N/mm <sup>2</sup> Thickness > 7,5 mm mínimo 12 N/mm <sup>2</sup>	UNE-EN ISO 10545-4:2012
 Crazing resistance	Pass	UNE-EN ISO 10545-11:1997
 Household products resistance	GA	UNE-EN ISO 10545-13:1998
 Chemical resistance	GLA	UNE-EN ISO 10545-13:1998
 Stain resistance	Class 5	UNE-EN ISO 10545-14:1998

## MESTIZAJE

### Recommendations / Recomendaciones

## Technical Drawings / Planimetría



### WAREHOUSING

In order to guarantee the characteristics of the finish the product must be kept in its original packaging until the time of fixing. If the product is likely to be stored for a long period of time it should be suitably covered.

### TILE FIXING

To ensure the products adhere correctly to the surface, it is essential to use specific adhesive and grouting material. This must also be suitable for the environment they will have to withstand. Fitting with traditional mortars does not ensure good adhesion.

Due to the nature of the material there may be dimensional variations between pieces. Therefore, all types of joints must be planned and carried out correctly: structural, perimeter, expansion and installation joints. Fitting tiles without joints is not advisable from any technical point of view as this may lead to various problems. For an optimal result, we advise to use 2 mm (0.08") grout for Chateau and 1 mm (0.04") for Zellige.

### MAINTENANCE AND CLEANING

Once the materials have been fitted, it is advisable to remove any remaining adhesive and grouting material by using a commercial descaling product designed especially, diluted with water. The descaling product must not remain in contact with the surface to be cleaned for more than 5 minutes.

As a general guideline, powder detergents should not be used, not wire wool or abrasive materials. Generally a sponge will be sufficient with warm water and liquid neutral soap. Then rinse with plenty of clean water.

### ALMACENAMIENTO

Para garantizar las características de su acabado, el producto debe mantenerse en su embalaje original hasta el momento de la colocación. Si el producto va a permanecer almacenado durante un largo periodo es conveniente hacerlo bajo cubierta.

### COLOCACIÓN

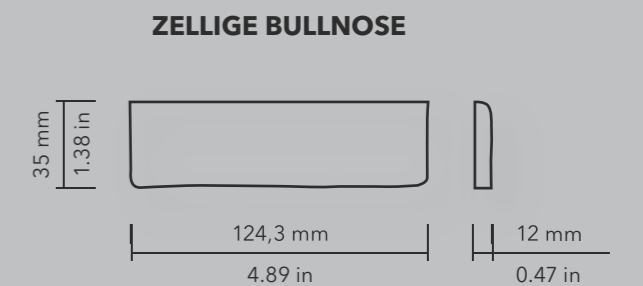
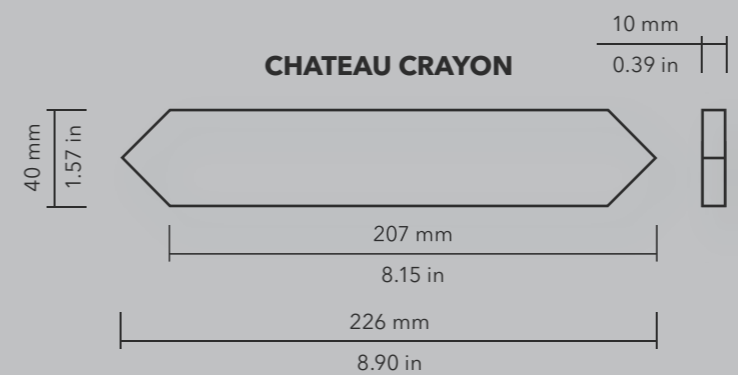
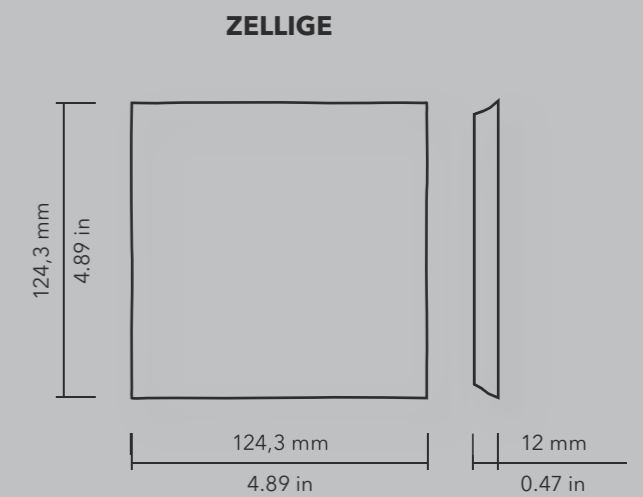
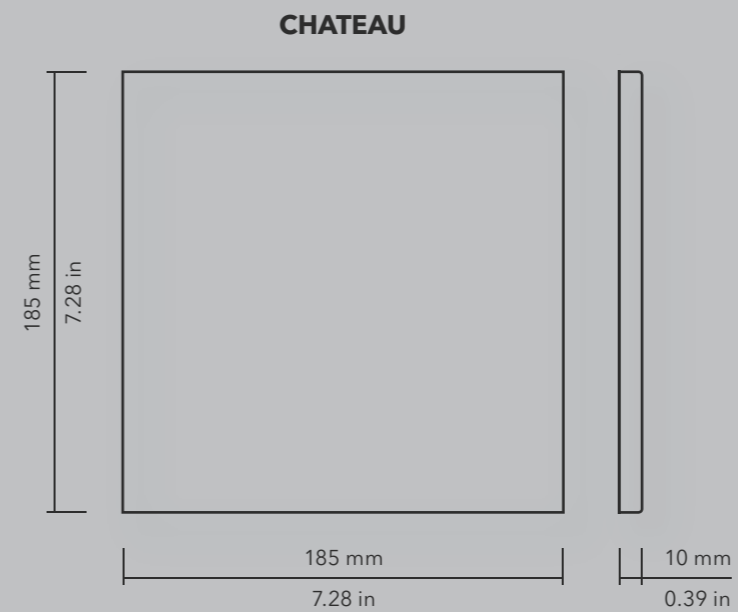
Para garantizar una buena adhesión al soporte es necesaria la utilización de materiales de agarre y de rejuntado adecuados al ambiente al que vayan a estar sometidos. La colocación con morteros tradicionales no garantiza una buena adhesión.

Debido a la naturaleza del material pueden existir diferencias dimensionales entre piezas. Por ello deberán planificarse y ejecutarse correctamente todo tipo de juntas: estructurales, perimetrales, de dilatación y de colocación. La colocación sin juntas es desaconsejable desde cualquier punto de vista técnico, pudiendo ser el origen de diversas patologías. Para un resultado óptimo, recomendamos usar 2 mm de junta para Chateau y 1 mm para Zellige.

### MANTENIMIENTO Y LIMPIEZA

Finalizada la puesta en obra se recomienda eliminar los restos de materiales de agarre y rejuntado con un desincrustante comercial diseñado expresamente para baldosas cerámicas, rebajado con agua, permaneciendo en contacto con la superficie a limpiar no más de 5 minutos.

Como norma general no deben utilizarse detergentes en polvo ni estropajos metálicos o abrasivos. Generalmente será suficiente con una esponja, agua tibia y un jabón líquido neutro. Posteriormente aclarar con abundante agua limpia.



**MESTIZAJE  
Packing**

**Chateau + Chateau Crayon**



Model	Size (in)	Pieces/box	lb/box	sq ft/box	Box/pallet	sq ft/pallet
Zellige	5"x5"	27	17.39 lb	4.52 sq ft	102	461.04 sq ft
Zellige Decor	5"x5"	27	17.39 lb	4.52 sq ft	102	461.04 sq ft
Zellige Bullnose	1.5"x5"	36	6.94 lb	14.70 Lft	350	5,166 Lft
Chateau	7"x7"	10	18.23 lb	3.66 sq ft	108	395.28 sq ft
Chateau Lines	7"x7"	10	18.23 lb	3.66 sq ft	108	395.28 sq ft
Chateau Antique	7"x7"	10	18.23 lb	3.66 sq ft	108	395.28 sq ft
Chateau Crayon	1.5"x9"	46	20.11 lb	4.12 sq ft	90	371.07 sq ft

Modelo Model	Tamaño (cm) Size (cm)	Piezas/caja Pieces/box	Kg/caja kg/box	m <sup>2</sup> /caja m <sup>2</sup> /box	Cajas/palet Box/pallet	m <sup>2</sup> /palet m <sup>2</sup> /pallet
Zellige	12,5x12,5 cm	27	7,89 kg	0,42 m <sup>2</sup>	102	42,84 m <sup>2</sup>
Zellige Decor	12,5x12,5 cm	27	7,89 kg	0,42 m <sup>2</sup>	102	42,84 m <sup>2</sup>
Zellige Bullnose	3,5x12,5 cm	36	3,15 kg	4,48 m	350	1,568 m
Chateau	18,5x18,5 cm	10	8,27 kg	0,34 m <sup>2</sup>	108	36,72 m <sup>2</sup>
Chateau Lines	18,5x18,5 cm	10	8,27 kg	0,34 m <sup>2</sup>	108	36,72 m <sup>2</sup>
Chateau Antique	18,5x18,5 cm	10	8,27 kg	0,34 m <sup>2</sup>	108	36,72 m <sup>2</sup>
Chateau Crayon	4x22,6 cm	46	9,12 kg	0,38 m <sup>2</sup>	90	34,47 m <sup>2</sup>



To replicate this layout you need: 66.6% Chateau square tiles and 33.4% Crayon shaped tiles of the total surface.  
For 1 sqm. : 0.666 sqm (7.168 sqft) square tiles and 0.334 sqm (3.595 sqft) Crayon shaped tiles.

**IMPORTANT ANNOUNCEMENT**

Chateau has been designed purposely looking for differences in thickness, relief and texture between pieces. Do not attempt to equalize the pieces during installation, since the controlled irregularity effect that WOW has sought when designing the collection would not be achieved.

Para reproducir esta composición, se necesita un 66,6% de la superficie total de pavimento Chateau cuadrado y un 33,4% de Crayon. Para 1 m<sup>2</sup> : 0,666 m<sup>2</sup> pavimento Chateau cuadrado y 0,334 m<sup>2</sup> Crayon.

**AVISO IMPORTANTE**

Chateau ha sido diseñado buscando a propósito diferencias de espesor, relieve y textura entre piezas. No se deben intentar igualar las piezas durante su instalación, puesto que no se lograría el efecto de irregularidad controlada que ha buscado WOW al diseñar la colección.

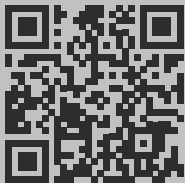
Designed by



Polígono Pont, Avda. de España 114  
12180 Cabanes,  
Castellón (Spain)  
t. +34 964 331 910 / f. +34 964 331 911

wowdesigneu.com

info@wowdesigneu.com  
comercial@wowdesigneu.com



---

**©2017 Tendencias Cerámicas**

WOW, registered trademark of Tendencias Cerámicas, S.L.

The brand use or reproduction of the contents of this catalog, is protected by copyright law. Any use of the brand or reproduction thereof, in part or total, must be authorized by Tendencias Cerámicas, S.L. Otherwise, this action can be sanctioned according to the Law.

---

**©2017 Tendencias Cerámicas**

WOW, marca registrada por Tendencias Cerámicas, S.L.

La utilización de la marca o la reproducción del contenido de este catálogo está protegida por la Ley de Propiedad Intelectual. Cualquier uso de la marca o la reproducción del mismo, en parte o en su totalidad, debe ser autorizada por Tendencias Cerámicas, S.L., pudiendo, en caso contrario, ser esta acción sancionada de acuerdo con la Ley.

---

WOW reserves the right to modify and/or discontinue certain models displayed in this catalogue.

The colour of the pieces displayed herein may differ slightly from originals.

The settings shown in this catalogue are design proposals for advertising purposes.

In real situations in which the pieces are laid, the installation instructions published by WOW should be followed.

---

WOW se reserva el derecho de modificar y/o suprimir ciertos modelos expuestos en este catálogo sin previo aviso.

Los colores de las piezas pueden presentar ligeras diferencias respecto a las originales.

Los ambientes que se muestran en este catálogo son sugerencias decorativas de carácter publicitario, debiéndose utilizar en la instalación real las instrucciones de colocación editadas por WOW.